

Market Release Note

MRN- EOL NOTICE – TS0866, TS0867, TS0869

Product number: TS0866, TS0867, TS0869

Product description: V8 Challenger Door Controller Series

Effective date: 1st December 2025

Aritech advises the end of life for the Tecom V8 door controllers - TS0866, TS0867 and TS0869.

After over 30 years of reliable service, these trusted devices are being replaced by a new generation of controllers offering improved performance, connectivity, and support. What does this mean? For these products, development has ended and support for non-warranty units will end as of 1st December 2025. Some accessories are still available and can be purchased while stocks last from Tecom distributors.

All existing warranties remain fully supported under the [Aritech warranty statement](#).

Specials are currently being run on new generation hardware to support sites in migrating to supported equipment, reach out to your local Tecom distributor to find out more!

Device replacement plan – Hardware

Note: All new generation hardware includes support for over 65,000 users, ethernet connectivity, OSDP support, Aperio and Salto RS4865 integration support, and much more!

[Network Access Controller \(NAC\) \(TS1066\) datasheet](#)

[Network Access Controller \(NAC\) with Wiegand \(TS1067E\) datasheet](#)

TS0866 -> TS1066 with the same board dimensions, cable locations and power usage, TS1066 can easily replace an existing TS0866. Consideration should be given to replacing aging power supply units**.

TS0867 -> TS1067E with the same board dimensions, cable locations and power usage, TS1067E can easily replace an existing TS0867. Consideration should be given to replacing aging power supply units**.

***TS0869 -> TS1067E** with the same board dimensions, cable locations and power usage, TS1067E can easily replace an existing TS0867. Consideration should be given to replacing aging power supply units**.

***TS1066 and TS1067E** can function as a door or lift controller, or a combination of both. No separate firmware is required.

****TS1066 and TS1067E** can be run using existing PSUs from old generation hardware. However, to experience the full benefit of newer devices, a replacement may need to be installed.

Device replacement plan – Software

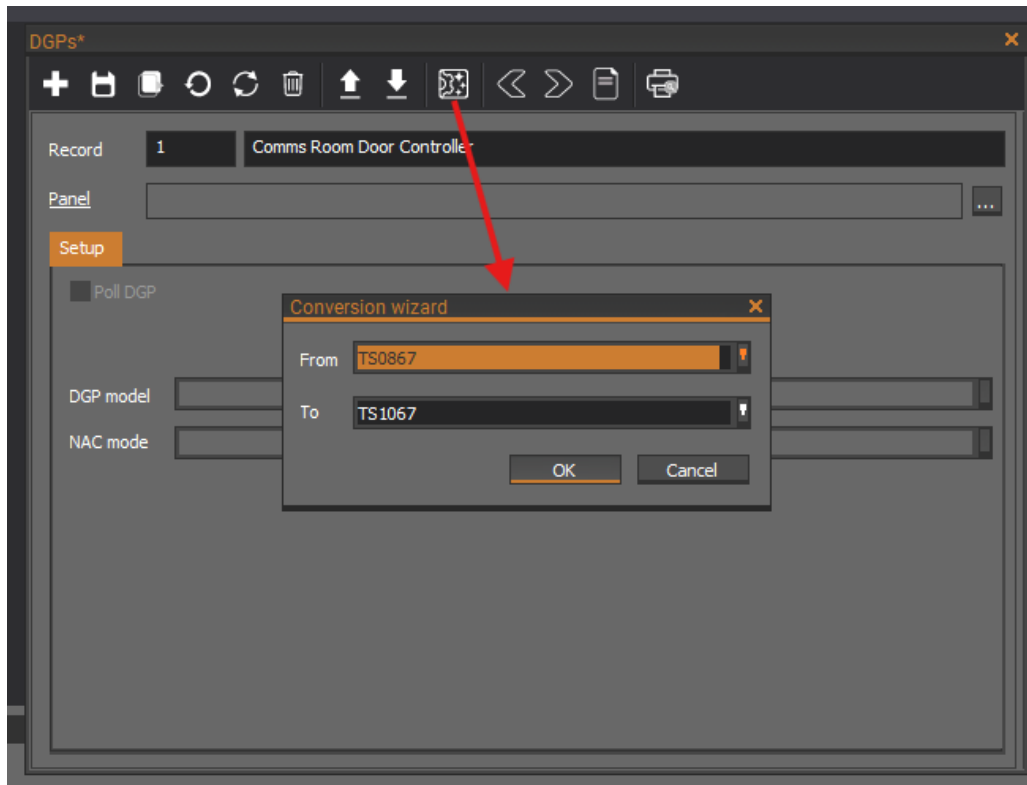
Note: Titan and Security Commander are both end of life and as such do not support new generation devices. Please reach out to your security installation company to receive assistance in updating to the most appropriate new generation software.

To learn more, visit:

[WMSPPro](#), [WMS](#), [TecomC4](#)

WMS Pro, WMS or TecomC4

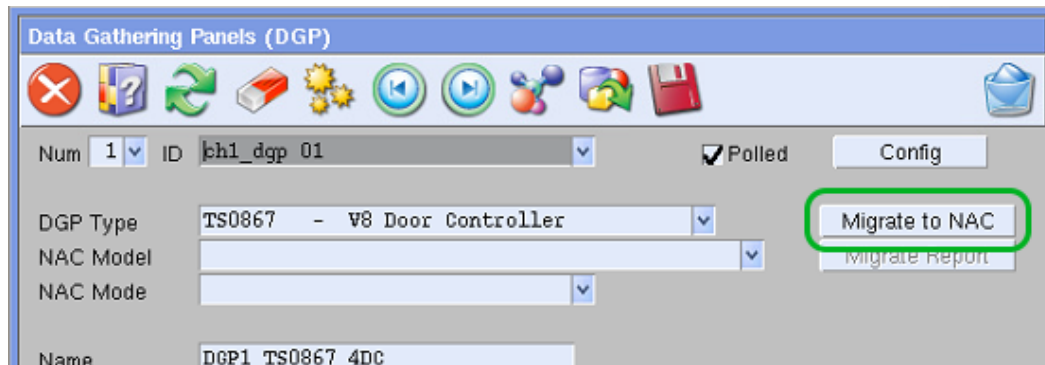
Utilising CTPlus programming software, an installer can use the ***built-in migration*** tool to upgrade from TS0866/67/69 to the TS1066 or TS1067E.



Forcefield

Note: Forcefield must be version 8.1 or newer

Users can navigate to the following menu: Panels > Panel Programming > Programming > Data Gathering Panels (DGP) and select "Migrate to NAC".



Attention! Please review the full knowledge base article before proceeding

<https://support.firesecurityproducts.com.au/hc/en-us/articles/7709272361231-Forcefield-8-1-TS0867-to-NAC-TS1066-TS1066-4-and-TS1067-Conversion-Wizard-process-steps>

Upgrade Benefits

- Direct connection to supported software
- Compatible with Discovery and ChallengerPlus panels for intrusion, or stand alone for access control
- Large memory capacity:
 - 250,000 users
 - 10,000 door groups
 - 50,000 history events
- Dual downstream BUS (configurable independently) that support:
 - Tecom RS-485 readers or expanders
 - OSDP v2
 - Aperio
 - Salto
- Remote flash firmware upgradeable (physical firmware upgrade eprom units no longer required)
- Onboard ethernet
- 8 inputs onboard (TS1066), 16 inputs onboard (TS1067E)
- 6 readers per door with any combination of in/out
- Relay expander port

- Support for multiple end-of-line (EOL) resistor values
- Scheduled lock/unlock override times
- User configurable door override times
- Card data can be up to 128 bits on every credential
- Each user can have a 10-digit PIN
- Map up to 32 inputs and 16 outputs for use with Discovery or ChallengerPlus panel
- Up to 100 actions can be scheduled such as lock/unlock and enable/disable.
- Internal error analysis (can find and repair faults avoiding unit malfunction)

Support

Please contact your local point of sale or distributor for assistance in upgrading.

Alternatively, you can also view our knowledge-base articles by creating an account and signing in to the [Aritech Support Portal](#).