

## 2105A-G

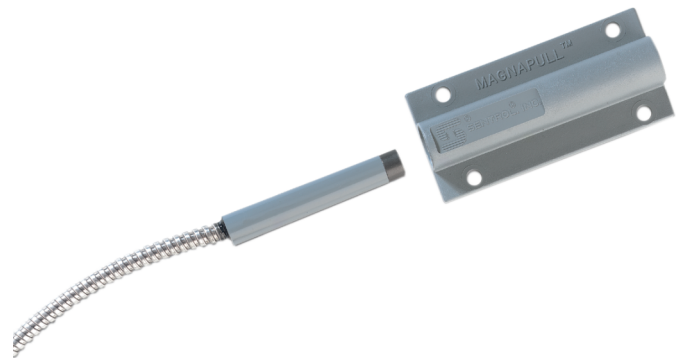
### Magnapull heavy duty magnetic pull-apart contact

#### Superior Function

The Magnapull™ magnetic pull-apart cords by Sentrol are used to protect valuable freestanding items that are stored outdoors. The high-impact plastic housing protects the contact from corrosion or high resistance buildup. End users simply insert the cable into the contact housing; there is nothing to line up. An alarm condition is created when the cord with the magnet is pulled from the housing.

#### Applications

The 2105A-G contact extend monitored security protection to items such as snowmobiles, lawn and garden equipment, boats, trailers, bicycles, and motorcycles. Magnapull™ pull-apart cords can also be used to secure fence gates, overhead doors and construction equipment.



#### Details

- Protect boats, trailers, barbecues, heavy equipment
- Secures almost any loose item
- Positive magnetic retention reduces false alarms
- Reed-actuated for high reliability
- Tamper loop provided
- Durable, high-impact plastic housing designed for long life

2105A-G

Magnapull heavy duty magnetic pull-apart contact

National Sales Enquiries  
Level 4.01, 2 Ferntree Place Notting  
Hill, Victoria 3168  
Phone: 1300 361 479  
Outside Australia: +61 401 777 572  
www.aritech.com.au

Technical specifications

Gap distance (max)

N/A

Connections

90 cm stainless steel armored cable

Contact

NC

Supervised loop

No

Dimensions

Contact (Ø x L)Ø 10 x 65 mm

Magnet (L x W x H)86 x 41 x 19 mm

Color

Grey