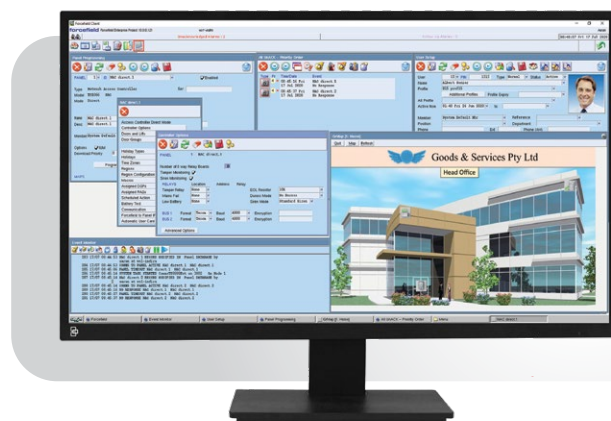


# Forcefield™

## Integrated security management platform



### Overview

Forcefield is an integrated security management platform that seamlessly combines access control, intrusion detection and video surveillance into a single, unified system.

#### More control than ever before

Managing license credentials for staff and visitors is now done easily via Forcefield.

User licenses allows an operator to add credentials to each user (such as security license, forklift license, site induction completion date, tight spaces training, high voltage, etc). An expiry date for each credential is also available and up to 5 licenses can be assigned per person.

Forcefield now makes management of expiring licences easier with a dual notification system. The first notification alerts you to an upcoming expiration date. At a nominated date, Forcefield will create a warning alarm advising the operator so that they may take steps to ensure the user(s) can action a renewal, or remove the license if no longer required.

The second notification alerts the operator to a license expiry date. If no action is taken and the license date passes, a user's access can be automatically expired by Forcefield. This allows customers to keep their employees and work sites safe by ensuring that only users with valid licenses have access to site.

Forcefield lets your system control access to your site seamlessly, removing the need for operators to manually manage user access.

#### Real-time operating system

Forcefield boasts a real-time operating system at its core for enhanced security and reliability while maintaining the flexibility and convenience of Windows workstations.

Automatic user import/export allows integration with visitor management and human resource systems to streamline people management in your organisation. Third-party systems can also be integrated to support pagers, duress solutions, intercom switchers and video systems.

Forcefield has a multi-node architecture which allows for modular scalability and distributed processing, eliminating the risk of one single point of failure. Wide area network server failover provides continuous access to your network across two distant locations.

Forcefield is scalable from a single site to a multinational deployment providing the network architecture that is critical to seamless real time multi-site and multi-user operation.

### VM Support

Forcefield gives security customers the ability to run Forcefield within a virtualised environment. This integration provides the following features and benefits:

- Simplifies disaster recovery configurations for IT departments
- Allows for deployment in standard virtual server environments
- Potentially increases performance due to more powerful hardware
- No host OS required. QNX installed straight on server hardware using VMware ESXi

### Features

- Supports all Challenger control panels
- Supports all Network Access Controllers
- Support for 4G connection to all Challenger panels (except Challenger v8) via the 4G Communications Module
- Windows 7, 8 and 10 support\*
- Manage up to 5 user-defined licenses, with dual notifications on expiration of license credentials
- Highly scalable solution supporting thousands of doors, cameras and alarm points
- High-level integration to third-party systems such as intercom, duress, HR and video
- Control doors, alarms, user access, cameras (including PTZ cameras) and digital recorders from map display
- Off-site server redundancy option
- Powerful third-party video integration, providing device status and video verification of alarms
- Supports up to 999 digital video recorders
- Automation of tasks based on specific events and operator actions
- Macro logic style event triggers
- Advanced alarm monitoring
- Powerful reporting features
- Integrated Photo ID
- VM Support

\* Video functionality not available on Windows 10

# Forcefield™

## Integrated security management platform

National Sales Enquiries  
Level 4.01, 2 Ferntree Place  
Notting Hill, Victoria 3168  
Phone: 1300 361 479  
Outside Australia: +61 401 777 572  
www.aritech.com.au

## Specifications

System Specifications	Forcefield VM	Forcefield Enterprise VM
Max. Challenger/Network Access Controller panels per node	32	128
Max. clients per node (Max. in a system)	5 (35 – 40) <sup>4</sup>	20 (200)
Max. nodes per system	7 – 8 <sup>4</sup>	20
Sustained events per second (burst rate higher)	20	20
Hot standby option	Yes	Yes
History events	3.5 million	3.5 million
Users	Up to 1 million	Up to 1 million
DVR's per system	999	999
Hardware Specifications		
Part number	TS9100VM	TS9120VM
Ports:		
Ethernet	1	2*
USB	9	2
Keyboard, Mouse	USB	USB
Serial Ports	1	1
In-built storage media	DVD-ROM / USB	USB
RAID	No	Yes
Rack Mount	No	Yes
Power supply	Internal	Internal dual redundant

\* Please refer to Installation Manual for configuration requirements

## Hardware and PC Requirements

Client PC Requirements <sup>3</sup>		
Operating system	Windows 7 Professional or above (32- and 64-bit) Windows 8.1 Professional or above (32- and 64-bit) Windows 10 Professional or above (32- and 64-bit)	
RAM	2GB RAM	
Network card	100Mbps/1Gbps	
VM Server Hardware	TS9100VM	TS9120VM
Model	Dell OptiPlex XE4 SFF XCTO	Dell PowerEdge R350 Rack Mount Server
Form factor	Small Tower	Rack Mount
CPU	Intel Core i3-12100 3.3GHz	Intel Xeon E-2336 2.9GHz
Disk	1 x 512GB SSD PCIe NVMe	2 x 480GB SSD SATA 6Gbps 2.5in Hot-plug
RAM	8GB (1x8GB) DDR4 non ECC memory	8GB UDIMM, 3200MT/s, ECC

## Ordering information

Forcefield will only be licensed to trained and assessed Forcefield installers. Accreditation details will be checked at time of license issue. System will not operate without a valid license.

Hardware Options	
TS9100VM	Forcefield hardware VM
TS9120VM	Forcefield Enterprise hardware VM <sup>1</sup>
Licensing Options	
TS9110	Forcefield Clients
TS9112	Ascom Nira Pager/Duress
TS9113	Jacques Intercom
TS9115	Multi-node capability <sup>2</sup> (License not required for Enterprise version). Additional Forcefield hardware must be purchased separately
TS9116	Third Party integration (see your supplier or Aritech sales representative for additional information)
TS9117	Aritech video integration <sup>2</sup>
TS9118	Hot Standby backup server capability (also requires TS9115)
TS9119	Auto user import/export
TS9170	Commend Intercom License (One required per intercom station) integration
TS91716	16-camera license
TS91732	32-camera license

Notes

<sup>1</sup> Forcefield Enterprise training level required.

<sup>2</sup> Forcefield Integration or Enterprise training level required.

<sup>3</sup> A Forcefield client can be used to display multiple video streams from video devices. The number of video streams for client and per monitor depends on the client computer's specifications such as CPU, video card, operating system and memory.

<sup>4</sup> Lower limit with Hot Standby enabled/Upper limit without Hot Standby enabled.



Specifications subject to change without notice.  
All trademarks are the property of their respective owners.

©2025 Aritech. All rights reserved.

TS9100VM\_DS\_SEPT25