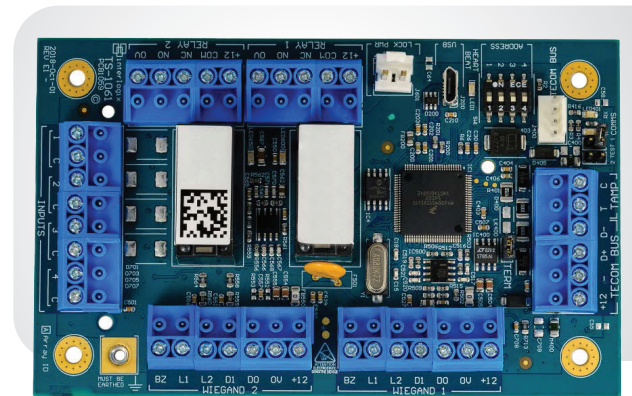


# CDC-2DWIF

CDC 2 door Wiegand interface  
with 2 relays and 4 inputs  
(board only) for CDC4 range



## OVERVIEW

The CDC-2DWIF is a Two Door Wiegand Interface offering two Wiegand interfaces, two relays and 4 inputs, making it the complete solution for controlling two doors.

CDC-2DWIF is controlled through the CDC4 door and lift controller. The unit will be polled as an expander/DGP on the RS485 data bus. Wiegand readers, relays and inputs can be assigned to any door or sent straight to the Axon series control panel when needed.

Using the readers, intrusion areas can be armed/disarmed using the same options as for all other doors on the CDC4.

## INSTALLATION

The Two Door Wiegand Interface is added in the existing CDC4 door & lift controller housing.

## FEATURES

- Two Door interface with two Relays, four inputs and two Wiegand interfaces
- Extends relays, inputs to CDC4 and provides for Wiegand interfaces
- Polled as a DGP on the CDC4 data bus
- Inputs can be used for Request To Exit, door contact, intrusion sensor or for any other purpose
- Two relays can be used to switch one or two doors or for any other purpose
- Supports Card data and PIN

# CDC-2DWIF

CDC 2 door Wiegand interface with 2 relays and 4 inputs  
(board only) for CDC4 range

National Sales Enquiries  
Level 4.01, 2 Ferntree Place  
Notting Hill, Victoria 3168  
Phone: 1300 361 479  
Outside Australia: +61 401 777 572  
[www.aritech.com.au](http://www.aritech.com.au)

## SPECIFICATIONS

General	
Expander type	Interface
Product line	Axon
Max. distance from panel	1.5 km from control panel
Addressing type	DIP Switches
Interface & Connections	
Interface	Axon RS-485, Wiegand
Connector type	Terminal Strip
Inputs / Outputs	
Inputs	2
Input type	Multi purpose
Outputs	2
Outputs type	Aux relay - Form C, switches up to 1A @ 30 VDC
Electrical	
Operating voltage	9.5 - 14.4 Vdc
Current consumption	73 (nom) - 450 mA (max)
Reader ports	2 x Wiegand
Physical	
Physical dimensions	128 x 78 x 21 mm
Regulatory	
Compliance	CE, RCM